

1

Software Support

Table of contents

1	Software Support	1
1.1	Running Software from Explorer	3
1.1.1	.Net Programs.....	3
1.1.2	Java Programs	3
1.2	Sound through the keyboard/computer.....	3
1.2.1	Select MIDI device for MIDI playback.....	3
1.2.1.1	Windows XP and older	3
1.2.1.2	Windows Vista, Windows 7, and Windows 8.....	4
1.2.2	Sound through the keyboard.....	4
1.2.3	Sound in my Software Programs	4
1.2.4	Keyboard without USB ports	5
1.2.5	Configuration	5
1.2.6	If you don't have a free COM Port.....	5
1.3	CBX Serial Driver Issue	6
1.4	Technical problems - .Net programs	6
1.4.1	Program does not start at all.....	6
1.4.1.1	.Net Framework not installed.....	6
1.4.1.2	Wrong Compatibility Settings	6
1.4.2	Program stops executing	6
1.4.2.1	Programming errors or Errors in configuration	6
1.5	Technical problems - Java programs.....	7
1.5.1	Program does not start at all.....	7
1.5.1.1	Java Runtime installation error	7
1.5.1.2	Classpath incorrect.....	8
1.5.1.3	Path incorrect.....	9
1.5.2	You get a "Windows is searching for javaw.exe..." message.....	9
1.5.2.1	Wrong Java Runtime installed.....	9
1.5.3	Program crashes/hangs at start time or while running.....	9
1.5.3.1	Programming errors	9
1.6	Required Software.....	9
1.6.1	.Net Framework for .Net based software.....	9
1.6.2	JRE for Java based software.....	10
1.6.3	Acrobat Reader for various software	10
1.6.4	File archive compress and extract.....	10
1.7	Software Compatibility.....	10
1.8	Software Settings Files	11
1.8.1	Settings Files Location	11
1.8.2	Settings Files Editing.....	12
1.9	Connect USB Drive to keyboard AND computer	12
1.10	Yamaha Internal Data.....	13
1.10.1	Multi Pad Numbers	13
1.10.2	Style Numbers	14
1.11	Yamaha Expansion Pack.....	15
1.11.1	What is YEP	15
1.11.2	Where to get.....	15
1.11.3	Interchangeability	15
1.11.4	Software	15
1.11.4.1	Styles In YEP Files.....	15
1.11.4.2	YEP Voice Manager	15
1.11.4.3	Voice editing software	15
1.11.4.4	Expansion Voice Editor.....	15
1.12	Yamaha File Extensions.....	15
1.12.1	Style Files	15
1.12.2	Registration Files.....	15
1.12.3	Voice Files	16
1.12.4	Yamaha Expansion Packs (YEPs)	16

1.12.5	Music Finder Files	16
1.12.6	MIDI and Audio Files	16
1.12.7	Multipad Files	16
1.12.8	Outdated files	16

© 2002-2013 Jørgen Sørensen

Web site: <http://www.jososoftware.dk/yamaha>

E-mail: js@jososoftware.dk

1.1 Running Software from Explorer

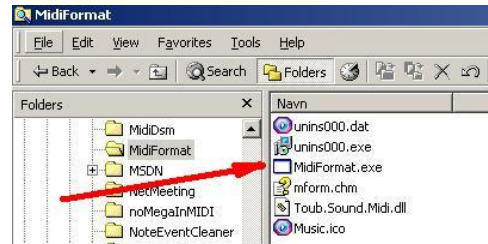
1.1.1 .Net Programs

Locate the Program folder at your hard disc.

Click the program exe file.

If the program does not start: Go to the Section 1.4 in this document.

Note: The .Net Framework has to be installed at the computer.

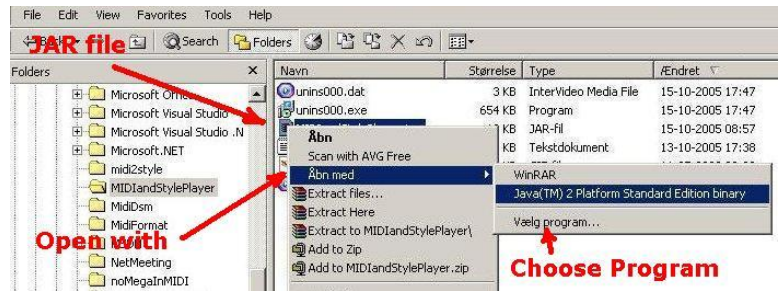


1.1.2 Java Programs

Locate the Program folder at your hard disc. Right click ".jar" file.

Select "Open with" option.

If "Java(TM) 2 Platform Standard Edition binary" is an option, select this. Otherwise, select "Choose Program" option.

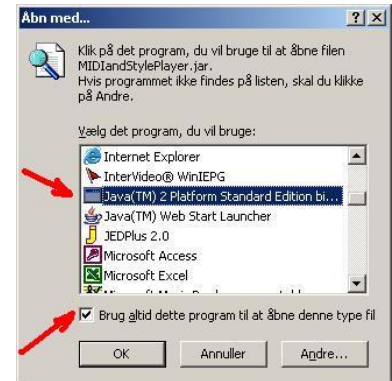


In the new window, select the "Java(TM) 2 Platform Standard Edition binary".

Check the "Always use this program..." checkbox; and in the future you will only have to click the ".jar" file to run the program.

If the program does not start: Go to the Section 1.5 in this document.

Note: Selecting "Java(TM) 2 Platform Standard Edition binary" is only possible if Java Runtime Environment (JRE) is installed at the computer.



1.2 Sound through the keyboard/computer

1.2.1 Select MIDI device for MIDI playback

1.2.1.1 Windows XP and older

Select a MIDI device in the computer as shown at the image below.

Configure in Windows Start > Settings > Control Panel > Sounds and Multimedia > Audio



(Image from a Danish Windows 2000 - other versions and languages looks similar)

1.2.1.2

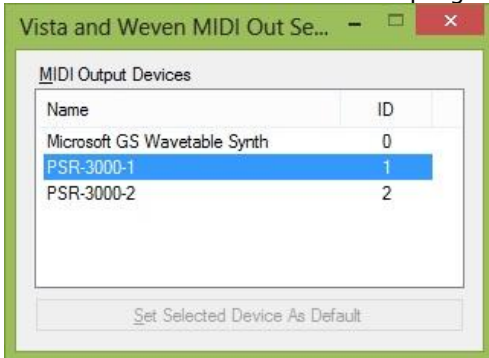
Windows Vista, Windows 7, and Windows 8

These OS versions has no build-in program for MIDI setup. Therefore you will need one of these programs.

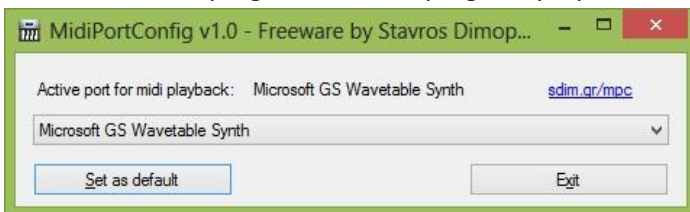
- Download [Windows Vista MIDI-Mapper](http://akkordwechsel.de/15-windows-vista-und-der-midi-mapper/) (<http://akkordwechsel.de/15-windows-vista-und-der-midi-mapper/>). This will install a setup applet in Control Panel. (This program is **NOT** updated for Windows 8).
- Download [MIDI Selector](http://sourceforge.jp/projects/openmidiproject/downloads/57286/MIDISelector0.2.zip/) (<http://sourceforge.jp/projects/openmidiproject/downloads/57286/MIDISelector0.2.zip/>). (link in one line!) Unzip the download file to a folder of your choice; and create a shortcut at the desktop or in the "Start" menu to run the program. Set the program properties to "Run as Administrator". User Interface in English and Japanese.



- Download the application [MIDI Out Setter](http://www.codeproject.com/Articles/36315/MIDI-out-setter) (<http://www.codeproject.com/Articles/36315/MIDI-out-setter>). Unzip the download file to a folder of your choice; and create a shortcut at the desktop or in the "Start" menu to run the program. Set the program properties to "Run as Administrator".



- Download the application [MIDI Port Config](http://www.sdim.gr/mpc/MidiPortConfig.zip) (<http://www.sdim.gr/mpc/MidiPortConfig.zip>). Unzip the download file to a folder of your choice; and create a shortcut at the desktop or in the "Start" menu to run the program. Set the program properties to "Run as Administrator".

**1.2.2 Sound through the keyboard**

If you want to use your keyboard for MIDI playback; you must

- Install the USB-MIDI driver software supplied with your keyboard. If you miss this, you can get it from [Yamaha](http://www.yamahaproaudio.com/global/en/downloads/firmware_software/) (http://www.yamahaproaudio.com/global/en/downloads/firmware_software/).
- Get a USB cable with a USB A connector in the one end, and a USB B connector in the other end.
- Plug the USB A connector into the computer, and the USB B connector into the keyboard USB **To Host** port.

For further details consult your keyboard manual or the documentation with the driver software.

1.2.3 Sound in my Software Programs

A number of my software programs has MIDI play back features. In these programs you will find a MIDI Setup menu.

Notice if nothing is selected in these programs, the computers default MIDI play back device will be used.

For programs written in a .Net language, the default MIDI play back device is the one selected above. Other available MIDI devices can be selected in the program.

For programs written in Java, the default MIDI play back device is the "Real Time Sequencer", which is built-in in Java. Other available MIDI devices can be selected in the program. Furthermore another Java built-in MIDI device named "Gervill" is available.

Selecting a MIDI play back device is for use in the specific software program only; and does not change the MIDI device selection at the computer generally.

1.2.4 Keyboard without USB ports

In this case you must use a COM port at the computer, and the keyboard **To Host** terminal.

- Connect your keyboard and your PC with the "To Host" cable, which comes with your keyboard (or buy one). If you don't have a free COM Port at your PC, read below.
- Install the Yamaha CBX driver supplied with your keyboard. If you don't have it; get it from [Yamaha](http://www.yamahaproaudio.com/global/en/downloads/firmware_software/mididrivers/cbx200w.jsp) (http://www.yamahaproaudio.com/global/en/downloads/firmware_software/mididrivers/cbx200w.jsp). (link in one line!)
- Be sure to set the switch at the rear side of your keyboard's "To Host" terminal to: PC2. Read the section about To Host terminal in your manual, if you are in doubt.

1.2.5 Configuration

Select (like above) the "Yamaha CBX A Driver" as MIDI play back device.

1.2.6 If you don't have a free COM Port

Note: This paragraph is **not** relevant when the keyboard USB port is used.

Using the keyboard To Host terminal

- You need a free COM Port for the "To Host" cable.
- Most stationary computers have only one of these (which is often used by other devices, e.g. a modem); and many laptops don't have a COM Port at all.

If you have **no COM Port** at your PC

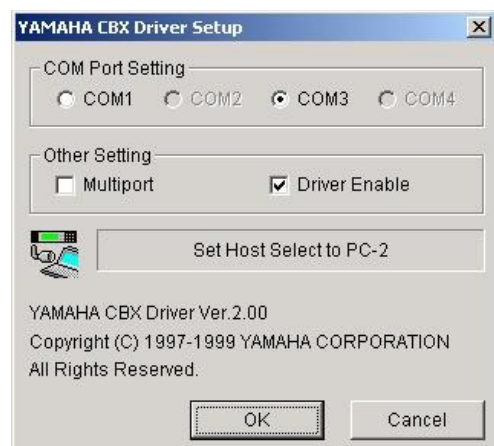
- Insert an extra card into your computer to get a COM Port.
- or
- Use an USB Port if you have one of these (read below).

If you have **no free COM Port** at your PC

- Insert an extra card into your computer to get an extra COM Port.
- or
- Plug and unplug the two cables which have to share the only COM Port. Don't plug or unplug while the computer is running.
- or
- Use an USB Port if you have one of these (read below).

If you have **an USB port** at your PC

- Get a USB to Serial Port Converter cable, e.g TU-S9 from [TRENDnet](http://www.trendnet.com/) (<http://www.trendnet.com/>).
- Plug the cable in the USB port.
- Windows will start the "Install new Hardware" wizard.
- Insert the CD supplied with the cable into your CD drive - and install the driver for the cable.
- Now your computer has a/an extra COM Port.
- Configure the Yamaha CBX Driver in Windows Start > Settings > Control Panel > Yamaha CBX Driver
- Select COM Port for the driver. If a computer has a COM Port this is by default COM1. Then choose COM3 for the Yamaha CBX Driver.
- Restart the computer.



(From Windows 2000 - other versions looks similar)

1.3 CBX Serial Driver Issue

This article is outdated.

1.4 Technical problems - .Net programs

1.4.1 Program does not start at all

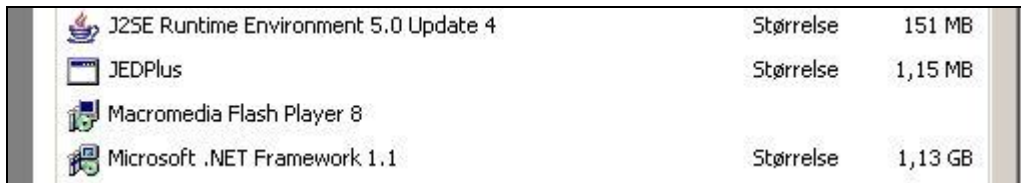
This error can have two known causes: .Net Framework not installed or Wrong Compatibility

1.4.1.1 **.Net Framework not installed**

You will most probably get an error message saying: "Mscoree.dll Could Not Be Found" .Net Framework 2.0 or higher must be installed at the computer.

More information:

- Open the Add/Remove programs window this way: Start > Settings > Control Panel > Add/Remove programs
- A list similar to this will appear:



J2SE Runtime Environment 5.0 Update 4	Størrelse	151 MB
JEDPlus	Størrelse	1,15 MB
Macromedia Flash Player 8		
Microsoft .NET Framework 1.1	Størrelse	1,13 GB

(Screen dump from Windows 2000. Other Windows versions look similar. .Net Framework 1.1 is installed here.)

[Get .Net Framework](http://www.microsoft.com/downloads/en/details.aspx?familyid=0856EACB-4362-4B0D-8EDD-AAB15C5E04F5&displaylang=en)

(<http://www.microsoft.com/downloads/en/details.aspx?familyid=0856EACB-4362-4B0D-8EDD-AAB15C5E04F5&displaylang=en>)

1.4.1.2 **Wrong Compatibility Settings**

You will most probably get an error message saying: "CLR Error:80070002 The program will terminate now" or something similar. This has been reported on WinXP systems only (Thanks René).

Check the program compatibility settings:

- Right click on the program executable file (.exe) and select the tab Compatibility.
- ALL checkboxes on this tab should be kept unmarked.

All program files (incl. the executable) are by default installed to a subfolder (named as the program itself) to the Program Files folder at your system's primary hard drive (mostly the C:\ drive). The Program Files folder may have localized names, e.g. Programmer (in Danish).

1.4.2 Program stops executing

This error can have two known causes: Programming errors or Errors in configuration.

1.4.2.1 **Programming errors or Errors in configuration**

Both situations will throw an "Unhandled exception"; and show this dialog box.

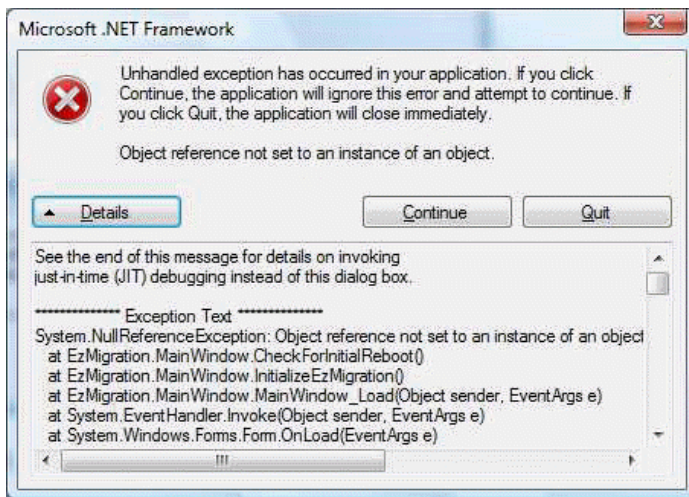


The error message is the last line. It is in your computers language.

As the message in the dialog says, you can try to click the "Continue" button. This might work...

However, I would like to have these errors reported; including some details.

Therefore click the "Details" button...



The first lines points to the origin of the exception. Please report this to me!

In this example, please report:

"Object reference not set to an instance of an object"

"at EzMigration.MainWindow.CheckForInitialReboot()"

This will give me the type of exception; and where to start looking for the cause.

1.5 Technical problems - Java programs

1.5.1 Program does not start at all





This error can have three known causes: Java Runtime installation error OR Classpath incorrect OR Path incorrect.

1.5.1.1 Java Runtime installation error

The correct version of Java Runtime Environment (read [Download Page](http://www.jososoftware.dk/yamaha/software/software.htm) (<http://www.jososoftware.dk/yamaha/software/software.htm>)) **must** be installed at the computer.

More information:

- Open the Add/Remove programs window this way: Start > Settings > Control Panel > Add/Remove programs
- A list similar to this will appear:

	J2SE Runtime Environment 5.0 Update 4	Størrelse	151 MB
	JEDPlus	Størrelse	1,15 MB
	Macromedia Flash Player 8		
	Microsoft .NET Framework 1.1	Størrelse	1,13 GB

(Screen dump from Windows 2000. Other Windows versions look similar.

Java JRE: "J2SE Runtime Environment 5.0 Update 4" is installed).

If no JRE is installed, install JRE.

If more versions of JRE are installed: Uninstall all versions and install newest JRE version.

If an old version of JRE (less than **6**) is installed: Uninstall the old version and install newest JRE version.

If version **6** of JRE and no other versions are installed: Your installation is OK.

[Get JRE](http://www.oracle.com/technetwork/java/javase/downloads/index.html) (<http://www.oracle.com/technetwork/java/javase/downloads/index.html>)

1.5.1.2

Classpath incorrect

The Classpath variable is used by Windows to tell the Java Runtime Environment(JRE) in which folder(s) to look for class files (Java executables).

If the Classpath variable is set to "C:\Program Files\SomeApplication" the JRE will look for the class file in this folder.

Classpath variables can be combined to cover multiple folders like this: "C:\Program Files\SomeApplication;C:\Program Files\AnotherApplication".

Note: The semicolon delimiters multiple folder paths.

To force the JRE to look into the current (active) folder add ". ;" in front of a Classpath variable like this: ". ;C:\Program Files\SomeApplication".

Note: The period is shorthand for current folder.

Some installation programs writes/modifies the classpath variable incorrectly.

Mostly these programs define their own folder only - and forgets the ". ;" as the first folder path in the classpath line.

Omitting ". ;" will force JRE to look for class files in the program's own folder exclusively - and NOT in the current folder.

I think you understand why this is a very, very bad habit: Windows will tell the JRE to look for class files in the program's folder only and will never look for class files in the current folder.

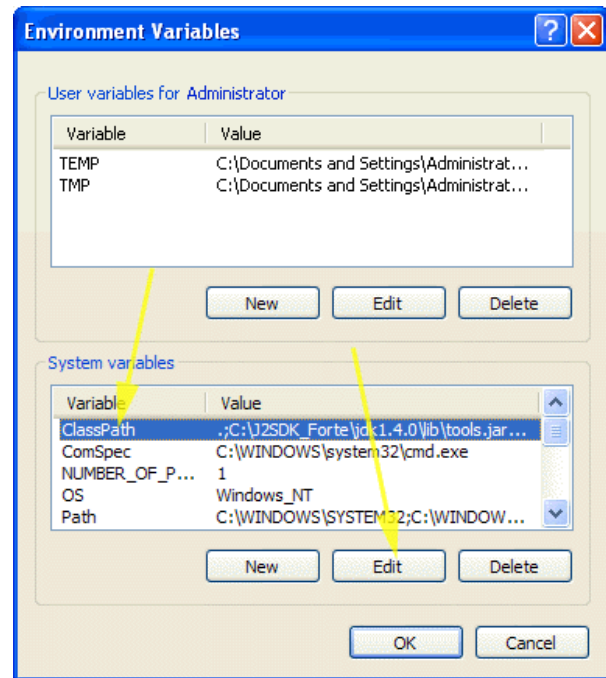
Note: At many computers the Classpath variable is not set at all. This will work like the period (current folder).

Editing the Classpath variable in Windows 2000 and XP

- Go to the Desktop
- Right click My Computer
- Select Properties
- Select the Advanced tab
- Click button Environment Variables
- Find Classpath in the System Variables window
- If Classpath is present highlight this and click Edit
- Add a **period** and a **semicolon** in front of the line as shown in the blue line in the image
- Keep clicking OK until all windows are closed again

Editing the Classpath variable in Windows Vista, 7 and 8

- Go to Control Panel
- Select System and Maintenance
- Select System
- Select Advanced system settings
- Select the Advanced tab
- Click button Environment Variables
- Find Classpath in the System Variables window
- If Classpath is present highlight this and click Edit
- Add a **period** and a **semicolon** in front of the line as shown in the blue line in the image
- Keep clicking OK until all windows are closed again



1.5.1.3 Path incorrect

The Path variable is used by Windows to tell Windows where to look for the Java Runtime Environment (JRE). The JRE file name is **javaw.exe**.

If for some reason this file is not found in one of the folders listed in the Path variable; the JRE will not be found; will not be started; and Java-based applications cannot run.

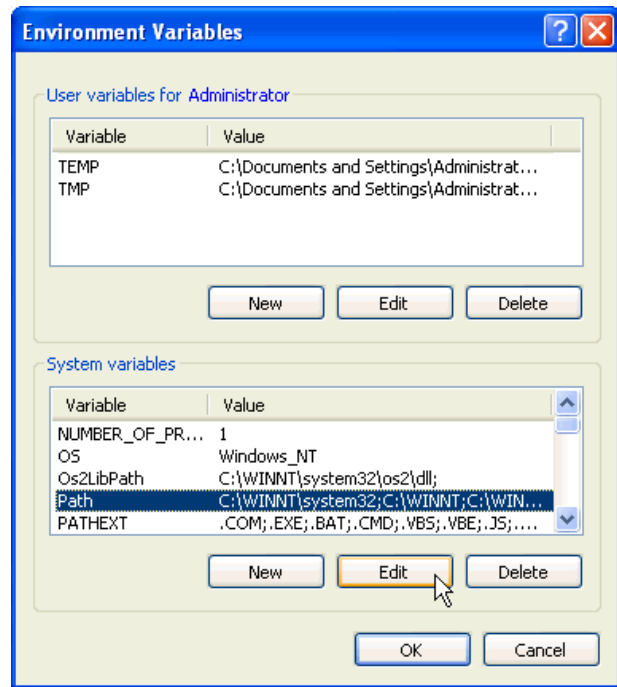
Normally the javaw.exe file is stored within the folder "C:\windows\system32"; which normally is the first folder name in the Path variable.

If javaw.exe is NOT in this folder, the easiest method is to locate "javaw.exe" in the file system; CREATE A COPY of this file; and place it in the "C:\windows\system32" folder.

A more difficult and more risky operation is to add the name of the folder where javaw.exe is stored (e.g. "C:\java\bin") to the Path variable.

Read in the section above how to view and edit System variables.

If you edit the Path variable remember to type a semicolon between folder names.



1.5.2 You get a "Windows is searching for javaw.exe..." message

This error can have three known causes: Wrong Java Runtime installed OR Classpath incorrect (as above) OR Path incorrect (as above)

1.5.2.1 Wrong Java Runtime installed

Make sure you install:

- the 32 bit JRE version at 32 bit Windows systems - (at the JRE download page called: "Windows x86 Online" or "Windows x86 Offline")
- the 64 bit JRE version at 64 bit Windows systems - (at the JRE download page called: "Windows x64")

1.5.3 Program crashes/hangs at start time or while running

This is caused by Programming errors.

1.5.3.1 Programming errors

A programming error will create a Java Runtime error and will stop the program execution.

When this happens nothing else but closing the program can be performed.

But the following information will be an invaluable help to me.

Please report:

- The program version number. See the "About" box.
- Which operation were you performing when the error occurred: Which menu was just selected; Which button was just clicked; etc.

1.6 Required Software

1.6.1 .Net Framework for .Net based software

Get [.Net 2.0 Framework](#)

(<http://www.microsoft.com/downloads/en/details.aspx?familyid=0856EACB-4362-4B0D-8EDD-AAB15C5E04F5&displaylang=en>)

- Click the "**Download**" button at the page
- Download the .Net Framework
- Install .Net Framework

1.6.2 JRE for Java based software

Get [JRE - for ALL systems except Mac](http://www.oracle.com/technetwork/java/javase/downloads/index.html)

(<http://www.oracle.com/technetwork/java/javase/downloads/index.html>)

- Click the "**Download JRE**" button
- Download the JRE version for your operating system. *)
- Install JRE

*) Make sure you get:

- the **32** bit JRE version for **32** bit Windows systems - (at the JRE download page called: "Windows x86 Online" or "Windows x86 Offline")
- the **64** bit JRE version for **64** bit Windows systems - (at the JRE download page called: "Windows x64")

Get [JRE - for Mac](http://support.apple.com/downloads/#java%20jre%201.6) (<http://support.apple.com/downloads/#java%20jre%201.6>)

Note: Anything labeled "**JDK**" is for Java developers only. Others have no use of it.

1.6.3 Acrobat Reader for various software

Get [Acrobat Reader](http://get.adobe.com/dk/reader/otherversions/) (<http://get.adobe.com/dk/reader/otherversions/>)

- Select the version for your operating system

1.6.4 File archive compress and extract

Get [WinZip](http://www.winzip.com/index.htm) (<http://www.winzip.com/index.htm>) for zip files. Not free!

Get [WinRar](http://www.rarsoft.com/) (<http://www.rarsoft.com/>) for rar files. Not free!

Get a freeware program for file compression and extraction [here](http://www.snapfiles.com/freeware/system/fwzip.html) (<http://www.snapfiles.com/freeware/system/fwzip.html>).

1.7 Software Compatibility

- midi2style
- MIDI Revoicer
- Style Revoicer

Compatible with:

Tyros: 4 - 3 - 2 - 1

PSR: 9000 Pro - 9000 - 8000 - 3000 - 2100 - 2000 - 1500 - 1100 - 1000 - 740 - 640 - 550 - 413 - K1

PSR: A2000 - S950 - S910 - S900 - S750 - S710 - S700 - OR700 - S650 - S550 - S500

CVP: 609 - 605 - 601 - 509 - 505 - 503 - 501 - 409 - 407 - 405 - 403 - 401 - 309 - 307 - 305 - 303 - 301

DGX: 640 - 630 - 620 - 520 - 505 - 500 - 305 - 300

YPG: 635 - 625 - 525

For **other models** the voice data must be entered in the User Interface:

- From the keyboard manual get the Prg.; MSB and LSB values for the voice; e.g. Prg. = 34, MSB = 0, LSB = 114.

- As Prg. values are 1-based in the manual, subtract 1 from the Prg. value; e.g. 34 - 1 = 33.

- Select the Prg.; MSB and LSB values in User Interface of the software program; e.g. Prg. = 33, MSB = 0, LSB = 114.

- OTS Editor
- OTS Viewer

Compatible with:

Tyros: 4 - 3 - 2 - 1

PSR: 3000 - 2100 - 2000 - 1500 - 1100 - 1000

PSR: A2000 - S950 - S910 - S900 - S750 - S710 - S700 - OR700 - S650 - S550 - S500

CVP: 609 - 605 - 601 - 509 - 505 - 503 - 501 - 409 - 407 - 405 - 403 - 401 - 309 - 307 - 305 - 303 - 301

For **other models** the model specific effects data list is not integrated. However, many common effects can be handled.

Help:

Multi Pad selection is not yet implemented in **PSR A2000; PSR OR700;** and **PSR 550.**

I need help to reveal the secret internal data from users of these models.

More in Section 10 in this document.

• Music Finder File Manager	<p>Compatible with: Tyros: 4 - 3 - 2 - 1 PSR: 3000 - 2100 - 2000 - 1500 - 1100 - 1000 PSR: S950 - S910 - S900 - S750 - S710 - S700 CVP: 505 - 503 - 501 - 409 - 407 - 405 - 403 - 401 - 309 - 307 - 305 - 210 - 209 - 208 - 207 - 206 - 205 - 204 - 203</p> <p>Help: This program is yet not compatible with CVP 609; CVP 605; CVP 601; CVP 509; PSR A2000; PSR OR700; PSR S650; PSR S550; and PSR 550. I need help to reveal the secret internal data from users of these models. More in Section 10 in this document.</p>
• Style Format 2 Converter	Compatible with SFF2 format styles only; i.e. styles for Tyros 4, Tyros 3, the PSR S-serie models, and the CVP 6xx/5xx-serie models.
• Style Old Format Converter	Compatible with SFF1 format styles only; i.e. styles for all Tyros, PSR, DGX, CVP and YPG models except Tyros 4, Tyros 3, the PSR S-serie models, and the CVP 6xx/5xx-serie models.
• CASM Editor	<p>Compatible with SFF1 format styles only; i.e. styles for all Tyros, PSR, DGX, CVP and YPG models except Tyros 4, Tyros 3, the PSR S-serie models, and the CVP 6xx/5xx-serie models.</p> <p>However voice lists for the excepted models have been added making it possible to handle styles for these models if these styles have been converted to the SFF1 format, i.e. using the Style Format 2 Converter software program.</p>
• Voice Finder	<p>Compatible with: Tyros: 4 - 3 - 2 - 1 PSR: 9000 Pro - 9000 - 8000 - 3000 - 2100 - 2000 - 1500 - 1100 - 1000 - 740 - 640 - 550 - 413 - K1 PSR: A2000 - S950 - S910 - S900 - S750 - S710 - S700 - OR700 - S650 - S550 - S500 CVP: 609 - 605 - 601 - 509 - 505 - 503 - 501 - 409 - 407 - 405 - 403 - 401 - 309 - 307 - 305 - 303 - 301 DGX: 640 - 630 - 620 - 520 - 505 - 500 - 305 - 300 YPG: 635 - 625 - 525</p>
• All other software programs	<p>No compatibility issues. Works with all Yamaha keyboards, or compatibility consideration is not relevant.</p>

1.8 Software Settings Files

1.8.1 Settings Files Location

Settings files were originally saved in the program installation folder.

Due to increasing security in Windows this was no longer possible when Windows Vista was introduced. The settings files were then moved to the Users Application Data Folder (see below).

As this folder could be pretty cluttered, the files were later moved to a subfolder (named "jososoft") to the Users Application Data Folder.

If you upgrade your program from an old version to the newest version, the program will automatically move the settings files to this later location.

In Windows 8, Windows 7 and Windows Vista you will now find the Settings Files in folder:
 C:\Users\\AppData\Roaming\jososoft

In Windows XP and Windows 2000 you will now find the Settings Files in folder:
 C:\Documents and Settings\\Application Data\jososoft

1.8.2 Settings Files Editing

It is NOT recommended to edit the Settings Files manually.

However, you can edit file with ".ini" and ".dat" extensions in Note Pad.

When saving the edited file make sure to save it in the right name by selecting "All Files" when saving.

Otherwise you will get a file with "double" extension, e.g. "programdata.ini.txt"

Files with other extensions than the above mentioned are not manually editable.

If Settings Files are deleted the program will automatically create new files. Notice that these new Settings Files will hold default values.

Notice that the Settings Files format is not documented; and I can not make any troubleshooting if the Settings Files has been edited manually.

1.9 Connect USB Drive to keyboard AND computer

If your keyboard does not support data transfer using the Yamaha **Musicsoft Downloader** software program - or you do not want to use this - using USB drives for data transfer between a keyboard without HD and a computer is somewhat bothering.

But this bother can be eliminated by installing a switchbox that enables you to use the same USB drive on one computer and one keyboard.

The USB drive connects to the switchbox, which then connects to the computer and the keyboard.

You can then press a button on the box to change if the computer or the keyboard is connected to the USB drive.

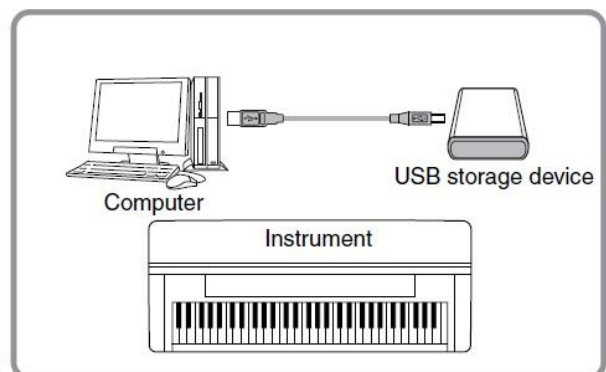
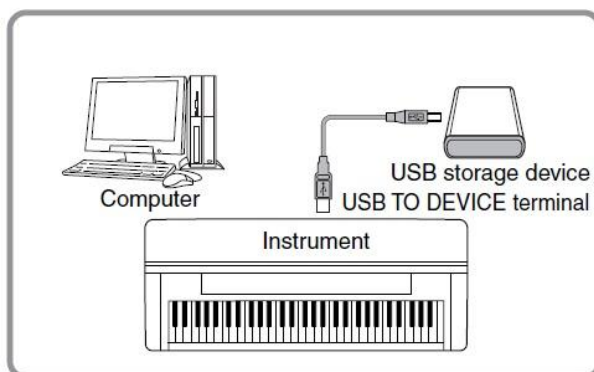
The image to the right shows the box and the connections.

Get the box from [Sandberg](http://www.sandberg.it/product/USB-2.0-Switcher) (<http://www.sandberg.it/product/USB-2.0-Switcher>). Unit price in Denmark is less 40 \$. You will need 2 USB cables for the connections. Both with a USB A connector in the one end, and with a USB B Connector in the other end. These are included with the Sandberg box.

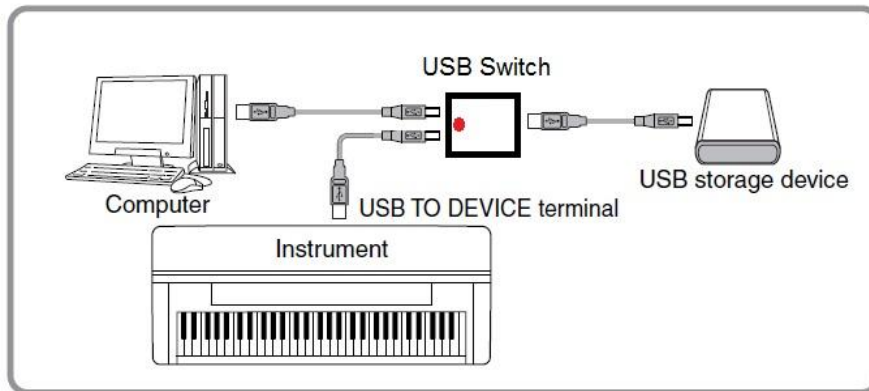
Notice: You will get the "usual" warnings when toggling between devices (= inserting/removing a USB device). Just be sure you are not transferring files when toggling.



The Yamaha Way: Remove USB storage device/cable from the keyboard and insert it into the computer. And vice versa.



My way: Press the red button at the switch box to connect/disconnect the USB storage device to the keyboard or to the computer.



1.10 Yamaha Internal Data

When developing software for Yamaha keyboards (or anything else...) you will need information about internal data; and the format of these.

Yamaha uses a lot of internal data formats; and only documents and publishes very few. Mainly only the MIDI related data.

This means that I have to spend many hours of revealing the internal data; and where and how this information is stored in files. In front of a particular keyboard.

Luckily a number of volunteers - having a diversity of keyboards at their disposal - helped me in this tedious job.

But still some data remains to be revealed. And this page describes how you can assist me in updating my software programs for use in YOUR keyboard model.

1.10.1 Multi Pad Numbers

for use in my OTS Editor and my OTS Viewer software programs.

I miss the internal Multi Pad Numbers for PSR A2000; PSR OR700; and PSR 550 keyboards.

To get these, go to the MultiPad data page in your Manual. You will see something like:

Multi Pad Bank List /Multi-Pad-Bank-Liste /Liste d

Order	Bank Name	Order	Bank Name
1	E.Gtr16BtCut1	61	PianoArp16Bt
2	E.Gtr16BtCut2	62	PianoArp8Bt
3	E.Gtr16BtCut3	63	HeavenArpeggio
4	FunkyGtr16Bt1	64	TwinkleArpeggio
5	FunkyGtr16Bt2	65	TechSeq1
6	FunkyGtr16Bt3	66	TechSeq2
7	DiscoGuitar	67	TranceSeq1

1. Now open a style (any will do)

2. Select One Touch Setting 1

3. Change the MultiPad to MultiPad number **1** in the manual data sheet (e.g. E.Gtr16BtCut1)

4. Select One Touch Setting 2

5. Change the MultiPad to MultiPad number **2** in the manual data sheet (e.g. E.Gtr16BtCut2)

6. Select One Touch Setting 3

7. Change the MultiPad to MultiPad number **3** in the manual data sheet (e.g. E.Gtr16BtCut3)

8. Select One Touch Setting 4

9. Change the MultiPad to MultiPad number **4** in the manual data sheet (e.g. FunkyGtr16Bt1)

10. Save the style as a user style as **mp1-4.sty**

11. Now repeat this sequence; but Change the MultiPad to MultiPad no **5, 6, 7** and **8**

12. Save the style as a user style as **mp5-8.sty**

13. Now repeat this sequence; but Change the MultiPad to MultiPad no **9, 10, 11** and **12**

14. Save the style as a user style as **mp9-12.sty**

15. etc.

16. Mail all the saved user styles to me. Find my address at the first page in this document.

17. I will now be able to extract the internal MultiPad numbers for all MultiPads.

1.10.2 Style Numbers

for use in my Music Finder File Manager software program.

I miss the internal Style Numbers for CVP 609; CVP 605; CVP 601; CVP 509; PSR A2000; PSR OR700; PSR S650; PSR S550; and PSR 550 keyboards.

To get these, go to the Style data page in your Manual. You will see something like:

Style List / Style-Li		
Style No.	Style No. (Category)	Style Name
Pop&Rock		
1	1	BritRockPop
2	2	AcousticRock
3	3	IndieRock
4	4	00sBoyband
5	5	Cool8Beat
6	6	VintageGtrPop

1. Now create a new Music Finder file

2. Add an entry in the Music Finder using the **first** style in the manual style list (e.g. BritRockPop)

3. Name the entry (Song Title) the same as the style (e.g. BritRockPop)

4. Add a new entry in the Music Finder using the **second** style in the manual style list (e.g. AcousticRock)

5. Name the entry (Song Title) the same as the style (e.g. AcousticRock)

6. Add another new entry in the Music Finder using the **third** style in the manual style list (e.g. IndieRock)

7. Name the entry (Song Title) the same as the style (e.g. IndieRock)

8. etc.

9. Mail the Music Finder file to me. Find my address at the first page in this document.

10. I will now be able to extract the internal Style numbers for all styles.

1.11 Yamaha Expansion Pack

This article describes Yamaha Expansion Packs (YEP): Content, availability, software for YEP, etc.

What is YEP

A Yamaha Expansion Pack is a package which adds more content to the keyboard:

- Voices
- Styles (optional)

Voices and styles are merged into a file, having a "yep" extension.

Some YEP contain Registrations and/or MultiPads. These data are not included in the "yep" file.

Where to get

YEP can be obtained from Yamaha Website Shop - <http://www.yamaha.com>.

Besides the YEP's for sale, some free YEP's can be found at Free Expansion Packs

Interchangeability

YEP for the A2000, S750 and S950 have the same format. YEP for S650 is another format. The size of YEP is limited by the keyboards storing capacity.

Software

Software for extracting and editing content in YEP's.

Styles In YEP Files

This software will extract the style files from YEP's. [Styles In YEP Files](#) First version was released June 6 2012. Has been updated lately.

YEP Voice Manager

This software is for managing YEP files. Adding/removing voices and/or styles. [YEP Voice Manager - beta v2.zip](#) The software is still in development. Follow and contribute to Václav Müller's project at [PSR Tutorial Forum](#). Those having the above mentioned keyboard models can help a lot by testing...

Voice editing software

Editing voices in YEP's is possible in some cases. If the voice is in wave format you can use [Goldwave](#) or another Digital Audio Editor. If it is uTG format... Sorry, no luck...

Expansion Voice Editor

This software is for creating YEP files. This is a Yamaha software program. The program and the manual are not available for public. Sorry...

1.12 Yamaha File Extensions

1.12.1 Style Files

Styles are the main component for music reproduction in arranger keyboards.

Style files holds MIDI data and some non-MIDI data.

Style files had some years ago always **sty** file extension. Now a number of files extensions are used: **pst** (pianist); **pcs** (piano combo); **sst** (session); **prs** (pro); **bcs** (basic) and **fps** (free play).

Beside the built-in styles additional style files can be loaded into most models. But due to some changes in the style file format during the years, styles might need conversion for use in smaller/older models.

1.12.2 Registration Files

Registrations are saved snapshots of all active keyboard settings; e.g. style, instruments. This makes it possible to set up your keyboard pressing one button.

Registrations are saved to files with **rgt** or **reg** file extension.

For the Tyros models Yamaha has developed utilities for converting registrations from one model to another.

More software tools for manipulation and conversion of registrations are available.

1.12.3 Voice Files

There are two different ways of changing the voices: Modifying the built-in voices or loading new voice samples.

The built-in voices can be modified, and may also work on other models. The new voice settings are saved to a file. File extensions are **org**; **vce**; **liv**; **swv**; **clv**; **mgv**; **sar**; **ldr**; and **drm**. Data format is MIDI.

When a built-in voice in the keyboard is loaded, the new settings are read and the voice is changed accordingly.

The latest high end arrangers, e.g. the Tyros models, will load 'real' new voices in the keyboard firmware. These voices are in files with **cvn**; **uvn** or **tvn** file extensions; and these are not interchangeable between models.

1.12.4 Yamaha Expansion Packs (YEPs)

A Yamaha Expansion Pack is a package which adds more content (voices and styles) to the keyboard.

The voices and styles are merged into a file, having a **yep** extension.

Some YEPs contain Registrations and/or MultiPads too. These data are not included in the "yep" file.

1.12.5 Music Finder Files

The Music Finder gives an easy way to select the style; tempo; and intro style part for songs.

The Music Finder holds a database of song records, where this information is stored.

Each model has a preset Music Finder database. The records in this database can be modified or deleted; and new ones can be added.

Furthermore the database can be replaced with a new database file. The file extension is **mfd**.

Music Finder database are keyboard specific; but to some extent they can be used in 'close' models. If not, software programs can be used edit the database on your PC.

1.12.6 MIDI and Audio Files

All Yamaha keyboards will read MIDI files - file extension **mid**.

MIDI files holds data - 'the music recipe' - to the sound generator; but no 'music'.

This must not be confused with audio files - file extensions **wav** and **mp3**. This later holds 'music' and is read only by high end arrangers.

1.12.7 Multipad Files

As an extra spice to your performances one of the built-in multipads can be added.

Besides this you can load additional multipads and get even more and new "spices".

Multipad files have a **pad** file extension; but the data inside the files are in MIDI format.

This makes it possible to create and edit multipads in MIDI sequencer software.

Multipad files can be transferred from one keyboard to another; and you can replace the multipad in a style with another and save this.

1.12.8 Outdated files

Files with an **ots** extension are 'One Touch Setting' files for PSR 9000 only. Later models use OTS data integrated in the style file.

Files with a **vic** extension are PSR 9000 voice data files.

Files with an **eff** extension are PSR 9000 effect data files.